

SUMMIT™

**FAMILY OF PUMP
PRODUCTS**

**PRODUCT
LINE**



PROVIDING QUALITY PUMPING PRODUCTS AT A FAIR MARKET PRICE

**YOUR BEST VALUE
SINCE 1982**



SUMMIT™
PUMP, Inc

www.SUMMITPUMP.com

© 2016 SUMMIT PUMP, Inc

2196 ANSI

- ANSI B73.1 PROCESS PUMP
- REAR PULL OUT DESIGN
- EXTERNAL AXIAL IMPELLER ADJUSTMENT
- MAXIMUM INTERCHANGEABILITY
- HEAVY DUTY SHAFT & BEARINGS
- RIGID FRAME FOOT
- OPEN IMPELLER
- EXTRA LARGE OIL SUMP
- CAPACITIES TO 6,000 GPM
- HEADS TO 730 FEET
- TEMPERATURES TO 700°F



2796

- SELF-PRIMING PROCESS PUMP
- REAR PULL-OUT DESIGN
- EXTERNAL AXIAL IMPELLER ADJUSTMENT
- OPEN IMPELLER
- CAPACITIES TO 1,250 GPM
- HEADS TO 400 FEET



2175

- STOCK/PROCESS PUMP
- REAR PULL-OUT DESIGN
- EFFICIENT PARTS INTERCHANGEABILITY
- SACRIFICIAL WEAR ITEMS
- DOUBLE WALL VOLUTE ON LARGER SIZES
- CAPACITIES TO 7,800 GPM
- HEADS TO 350 FEET



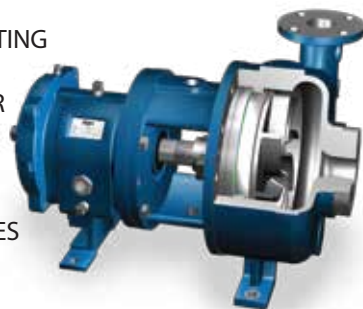
CLARK 3 ANSI PUMPS

- ANSI B73.1 PROCESS PUMP
- REVERSE VANE AND OPEN IMPELLERS
- REAR PULL OUT DESIGN
- INDEXED BEARING CARRIER FOR AXIAL IMPELLER ADJUSTMENT
- MAXIMUM INTERCHANGEABILITY
- HEAVY DUTY SHAFT AND BEARINGS
- CAPACITIES TO 6,800 GPM
- HEADS TO 750 FEET
- TEMPERATURES TO 700°F



2196R

- RECESSED IMPELLER PUMP
- INTERCHANGEABLE WITH EXISTING ANSI PUMPS
- HANDLES FIBROUS AND SHEAR SENSITIVE MATERIALS
- MINIMIZES DEGRADATION OF SOLIDS
- AVAILABLE IN 7 DIFFERENT SIZES AND A VARIETY OF MATERIALS
- CAPACITIES TO 1,750 GPM
- HEADS TO 275 FEET



2196LF ANSI

- LOW FLOW/HIGH HEAD PUMP
- RADIAL VANE IMPELLER WITH BALANCE HOLES
- INTERCHANGEABLE WITH EXISTING ANSI PUMPS
- CIRCULAR NON-EXPANDING CASE
- REDUCED SHAFT VIBRATION
- LOWER NPSH_r
- LOWER SEAL CHAMBER PRESSURE
- EXTENDED MTBF ON THE PUMP AND MECHANICAL SEAL
- CAPACITIES TO 215 GPM
- HEADS TO 900 FEET



CC & FM

- GENERAL SERVICE END SUCTION PUMP
- CLOSE COUPLED(CC) OR FRAME MOUNTED(FM)
- CAST IRON/BRONZE FITTED STANDARD
- 316SS WETTED PARTS OPTIONAL
- TYPE 1 MECHANICAL SEAL
- CAPACITIES TO 1,500 GPM
- HEADS TO 200 FEET



SP

- METAL OR RUBBER LINED
- HEAVY DUTY HORIZONTAL SLURRY PUMP
- DESIGNED TO PUMP HIGHLY ABRASIVE, HIGH DENSITY SLURRIES
- CAPACITIES TO 4,000 GPM
- HEADS TO 240 FEET



SHAFT KITS

- GROUND FINISH SHAFT & SLEEVE MINIMIZE RUN-OUT
- SUBASSEMBLY SIMPLIFIES MAINTENANCE & INVENTORY
- QUALITY SKF® EXPLORER CLASS BEARINGS
- BEARING ISOLATORS PROTECT YOUR PUMP
- FULLY INTERCHANGEABLE WITH EXISTING SUMMIT, FLOWSERVE/DURCO™ AND GOULDS™ POWER ENDS



FOREVER FRAME™

- INTERCHANGEABLE WITH 2196 ANSI, 2196R, 2196LF ANSI AND 2796 PUMPS
- ANSI B73.1 COMPATIBLE
- EXTERNAL AXIAL IMPELLER ADJUSTMENT
- ADVANCED THERMAL FATIGUE RESISTANCE
- OUTSTANDING USE IN CORROSIVE AND FOOD APPLICATIONS
- HEAVY DUTY SHAFT & BEARINGS
- STAINLESS FASTENERS, PLUGS, SIGHT GLASS



SN

- SELF-PRIMING, NON-CLOGGING PUMP
- CAST IRON STANDARD
- STAINLESS WETTED PARTS OPTIONAL
- MECHANICAL SEAL STANDARD
- 2" THROUGH 10" SIZES AVAILABLE
- CAPACITIES TO 3,400 GPM
- HEADS TO 145 FEET



DSR

- HORIZONTAL SPLIT CASE PUMP
- SINGLE STAGE
- HIGH EFFICIENCY AND LOW NPSH_r
- CLOSED IMPELLER
- PACKED BOX STANDARD
- STAINLESS WETTED PARTS OPTIONAL
- CAPACITIES TO 12,000GPM



PROGRESSIVE CAVITY

- MODELS FEATURE EITHER AN OPEN PIN DESIGN FOR EASE OF MAINTENANCE AND LOW COST OR A SEALED GEAR JOINT TO HANDLE HIGH THRUST AND RADIAL LOADS IN THE TOUGHEST APPLICATIONS
- CAPACITIES TO 1000 GPM
- PRESSURES TO 540 PSI

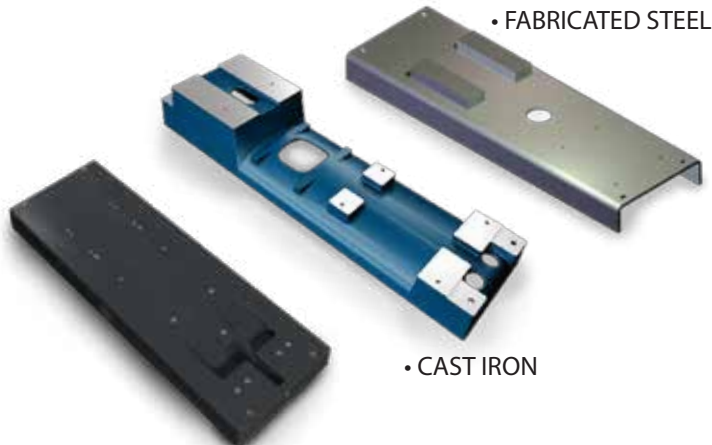


INTERNAL GEAR

- POSITIVE DISPLACEMENT COMPACT PUMP
- MULTIPLE MATERIAL OPTIONS
- END CLEARANCE ADJUSTMENT FOR A VARIETY OF FLUIDS
- EASY ASSEMBLY AND DISASSEMBLY FOR SHORT DOWNTIME
- MAXIMUM INTERCHANGEABILITY
- MULTIPLE MODELS TO CHOOSE FROM
- CAPACITIES TO 500 GPM
- PRESSURES TO 250 PSI



BASE PLATES



• FABRICATED STEEL

• CAST IRON

• POLYMER CONCRETE

LANTERN RINGS

- THERMAL FORMED: FITS YOUR STUFFING BOX BETTER
- EASY TO INSTALL
- ONE RING FITS MULTIPLE STUFFING BOXES; MEANING FEWER ORDERS, LOWER INVENTORY, AND FEWER OUTAGES
- VIRGIN PTFE TEMPERATURE TO 500° F, PH RANGE FROM 0-14



LABYRINTH SEALS

- BEARING ISOLATORS ARE MADE OF HIGH QUALITY BRONZE AND/OR STAINLESS STEEL
- DESIGNED TO LAST FOR AT LEAST 100,000 PUMPING HOURS.



GUARDS

- BARREL TYPE COUPLING GUARDS
- FRAME ADAPTER GUARDS
- CARBON STEEL CONSTRUCTION
- POWDER COATED SAFETY ORANGE
- INCLUDES END PLATES, SHROUDS, NUTS, BOLTS, WASHERS AND WARNING LABEL
- OTHER MATERIALS ALSO AVAILABLE



PARTS TO FIT

- MANY REPLACEMENT PARTS AVAILABLE FOR THE FOLLOWING PUMP LINES:

- ALLIS CHALMERS
- AHLSTROM
- ALLWEILER®
- ASH®
- FLOWSERVE/DURCO®
- DEAN®
- GIW®
- GORMAN RUPP®
- GOULDS
- GOULDS MORRIS
- MOYNO®
- NETZSCH®
- SEEPEx®
- SULZER®
- TARBY®
- WARREN RUPP®
- WEMCO®
- WORTHINGTON®



For more information on our products, contact your local distributor.



SUMMIT™
PUMP, Inc

www.SUMMITPUMP.com

OEM NAMES ARE FOR REFERENCE ONLY AND IN NO WAY INDICATE THAT WE ARE SUPPLYING OEM PARTS OR IN ANY WAY REPRESENT THAT OEM.